

The background features a large, dark grey circle on the left side. The rest of the background is composed of several colored rectangular sections: a light blue section at the top left, a large reddish-brown section in the center, a light blue section at the top right, and a light beige section at the bottom right.

alice

A Z I E N D A



c o m p a n y

Alice fa parte del distretto ceramico di Civita Castellana. Il contributo di idee e creatività da parte dei nostri collaboratori ci permette di produrre quotidianamente prodotti di grande pregio con originalità e passione. Il nostro know-how deriva da una lunga tradizione nella lavorazione della ceramica che rappresenta il patrimonio culturale della nostra regione. Qualità, innovazione e un po' d'orgoglio rendono le nostre creazioni uniche.

Alice is part of the ceramic district of Civita Castellana. The contribution of ideas and creativity from our partners allows us to daily produce products of great value with originality and passion. Our know-how derives from a long standing tradition in ceramic processing which represents the cultural heritage of our region. Quality, innovation and a little bit of pride make our creations unique.

STABILIMENTO



f a c t o r y

Siamo una realtà in cui lavorano fianco a fianco operai, tecnici e designer, con un metodo artigianale sempre attento alle tecnologie più avanzate come il forno tunnel ed una elevata meccanizzazione in ottica di industria 4.0. L'unità produttiva si sviluppa su 20000 mq ed è previsto un ampliamento con un nuovo stabilimento "Alice 2" di ulteriori 10000 mq. La capacità produttiva si attesta sui 180.000 pezzi prodotti all'anno.

We are a environment in which workers, technicians and designers work side by side, with an artisanal method which also benefits from the most advanced technologies such as the tunnel oven or a high level of mechanization typical to industry 4.0. The production unit is spans over 20,000 square meters and an extension is planned with a new "Alice 2" plant for an additional 10,000 square meters. The production capacity is around 180.000 pieces produced per year.

V I S I O N E
G R E E N



g r e e n
v i s i o n

Da sempre riteniamo che la crescita aziendale passi anche attraverso una particolare attenzione all'ottica green, ragione per cui nei nostri stabilimenti i materiali di consumo sono tutti riciclabili ed è stato installato un impianto fotovoltaico da 500KW con previsione di un futuro ampliamento dello stesso.

We have always believed that company growth also passes through particular attention to green topics, which is why in our factories the consumable raw materials are all recyclable and a 500KW photovoltaic system has been installed with the goal of expanding it in the near future.

INNOVAZIONE



i n n o v a t i o n

alice



LONG STANDING TRADITIONS

Alice is part of the Italian ceramic district of Civita Castellana, producing products with originality and passion. Their knowledge is derived from a long standing tradition in ceramic processing which represents the cultural heritage of the region. Quality, innovation and a little bit of pride make Alice ceramics unique.



Nur Vessel Basin
Finish: Matt Alpine Green

“
Ceramics of Italy
”

Nur Vessel Basin
Finish: Matt Sand
Nur Freestanding Basin
Finish: Matt Coffee



robertson

design.ideas™

Visit robertsondesignideas.co.nz
for the extended range.



VESSEL BASINS

NUR 600 VESSEL BASIN

600(L) X 400(W) X 145(H)
1TH / NO OVERFLOW
VITREOUS CHINA

332001_ _



NUR 600 VESSEL BASIN

600(L) X 450(W) X 140(H)
1TH / NO OVERFLOW
VITREOUS CHINA

332101_ _



FORM 370 VESSEL BASIN

Ø370 X 175(H)
NTH / NO OVERFLOW
VITREOUS CHINA

224301_ _



FORM 600 VESSEL BASIN

600(L) X 450(W) X 120(H)
1TH / NO OVERFLOW
VITREOUS CHINA

224701_ _



EQUILIBRIUM H15 VESSEL BASIN

Ø420 X 150(H)
NTH / NO OVERFLOW
VITREOUS CHINA

351001_ _



ALICE ALIGLAZE+

Antibacterial enamel for a surface protected 99.99% from bacteria, enriched with silver, titanium and zinc ions.



ALICE FINISHES

Select finish code below e.g. Nur 600 Vessel Basin with Honey finish: 33200196



01
Gloss White



09
Matt White



08
Matt Black



43
Matt Coffee



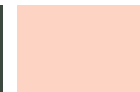
19
Matt Grey



44
Matt Sand



39
Matt Alpine
Green



37
Matt Rose



97
Gloss Tabasco



98
Gloss Myrtle



95
Gloss Pyne



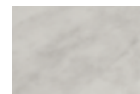
96
Gloss Honey



14
Metallic
Gold



12
Metallic
Platinum



85
Matt Carrara



86
Matt Marquinia



87
Gloss Bronze



88
Matt Amazon

alice

10 Year Guarantee*
Hand Finished Vitreous China

Aliglaze+
Thin Edge Design

Sottosquadro Curve (Nur)
Made in Italy

FREESTANDING BASINS

NUR FREESTANDING BASIN

475(L) X 475(W) X 910(H)
1TH / NO OVERFLOW
VITREOUS CHINA

331501_ _



EQUILIBRIUM H15 VESSEL BASIN

Ø420 X 150(H)
1TH / NO OVERFLOW
VITREOUS CHINA

331001_ _

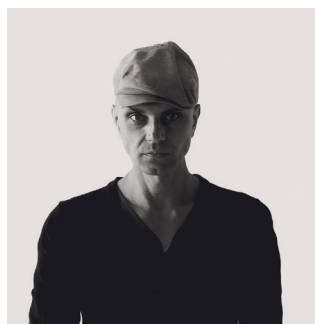


EQUILIBRIUM H15 PEDESTAL

225(L) X 225(W) X 725(H)
VITREOUS CHINA

WALL WASTE:

350001_ _



DESIGNED BY MASSIMILIANO BRACONI

Massimiliano Braconi was born in Civita Castellana. After obtaining a high school diploma in Art Studies, he received a degree from the Istituto Europeo di Design (IED) in Rome. In 2000, he founded his own design studio in Viterbo. Braconi describes his continually evolving style as that of an “unconventional, visionary artist”. He brings his utopian ideas to life in the widest, most liberating sense possible, advancing his art in the constant pursuit of an aesthetic that shapes the authentic experience of the individual.



Equilibrium Vessel Basin
and Pedestal



Nur 900 Wall Basin
Finish: Matt Coffee



Hide 500 Wall Basin
Finish: Matt Rose



robertson

design.ideas™

Visit robertsondesignideas.co.nz
for more information and availability



WALL BASINS

NUR 550 WALL BASIN

550(L) X 450(W) X 140(H)
1TH / NO OVERFLOW
VITREOUS CHINA

331801__



NUR 750 WALL BASIN

750(L) X 450(W) X 140(H)
1TH / NO OVERFLOW
VITREOUS CHINA

331701__



NUR 900 WALL BASIN

900(L) X 450(W) X 140(H)
1TH / NO OVERFLOW
VITREOUS CHINA

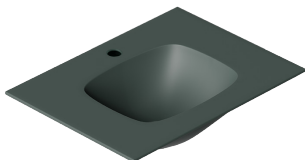
331601__



NUR 620 WALL BASIN

620(L) X 460(W) X 162(H)
1TH / NO OVERFLOW
VITREOUS CHINA

331931__



NUR 1020 WALL BASIN

1020(L) X 460(W) X 167(H)
1TH / NO OVERFLOW
VITREOUS CHINA

331971__



HIDE 500 WALL BASIN

500(L) X 350(W) X 135(H)
1TH / NO OVERFLOW
VITREOUS CHINA

312701__S











THE "SOTTOSQUADRO" CURVE

The NUR collection represents the pinnacle of Italian engineering and sanitary design, with the edges of the Nur washbasin requiring a reinterpretation of the classic casting process to accommodate the "Sottosquadro" curve. Craftsmen are required to gradually remove the plaster molds by hand to allow for a multi-stage drying process. The negative inclination of the edge is unique and represents the renewed ambitious attitude of Alice together with the designer Massimiliano Braconi.

NUR / HIDE FINISHES

Select finish code below e.g. Nur 750 Wall Basin with Matt Rose finish: 331701**37**

								
01 Gloss White	09 Matt White	08 Matt Black	43 Matt Coffee	19 Matt Grey	44 Matt Sand	39 Matt Alpine Green	37 Matt Rose	97 Gloss Tabasco
								
98 Gloss Myrtle	95 Gloss Pyne	96 Gloss Honey	14 Metallic Gold	12 Metallic Platinum	85 Matt Carrara	86 Matt Marquinia	87 Gloss Bronze	88 Matt Amazon

alice

10 Year Guarantee*
Hand Finished Vitreous China

Aliglaze+
Thin Edge Design

Sottosquadro Curve (Nur)
Made in Italy

Designed by
Massimiliano Braconi



Nur 1020 Wall Basin
Finish: Matt Sand

*All guarantees are subject to terms
and conditions and available at:
robertson.co.nz/warranties



Nur 620 Wall Basin
Finish: Matt Black



alice



Spy 450 Wall Basin
Finish: Matt Black

robertson

design.ideas™

Visit [robertsondesignideas.co.nz](https://www.robertsondesignideas.co.nz)
for the extended range.

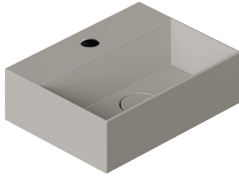


WALL BASINS

SPY 400 WALL BASIN

400(L) X 300(W) X 110(H)
1TH / NO OVERFLOW
VITREOUS CHINA

341201_ _



SPY 450 WALL BASIN

450(L) X 200(W) X 110(H)
1TH / NO OVERFLOW
VITREOUS CHINA

341101_ _



SPY 610 WALL BASIN

610(L) X 460(W) X 135(H)
1TH / WITH OVERFLOW
VITREOUS CHINA

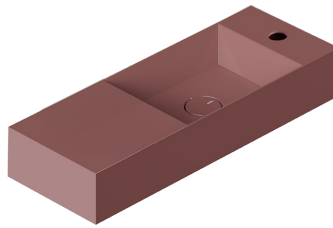
343201_ _



SPY 750 WALL BASIN

750(L) X 270(W) X 110(H)
1TH / NO OVERFLOW
VITREOUS CHINA

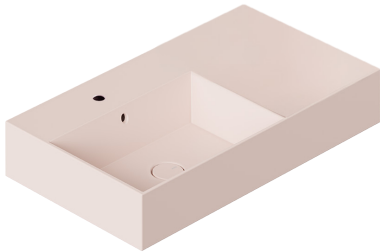
341501_ _



SPY 810 WALL BASIN

810(L) X 460(W) X 135(H)
1TH / WITH OVERFLOW
VITREOUS CHINA

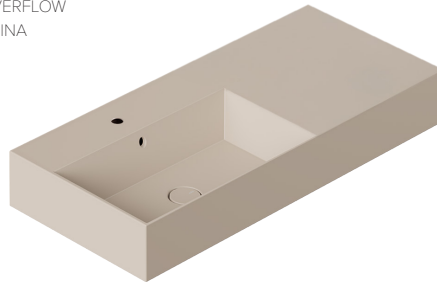
343401_ _



SPY 1010 WALL BASIN

1010(L) X 460(W) X 135(H)
1TH / WITH OVERFLOW
VITREOUS CHINA

343601_ _



SPY FINISHES

Select finish code below e.g. Spy 1010 Wall Basin with Matt Sand finish: 343601**44**



01
Gloss White



09
Matt White



08
Matt Black



43
Matt Coffee



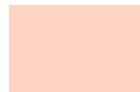
19
Matt Grey



44
Matt Sand



39
Matt Alpine
Green



37
Matt Rose



97
Gloss Tabasco



98
Gloss Myrtle



95
Gloss Pyne



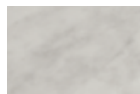
96
Gloss Honey



14
Metallic
Gold



12
Metallic
Platinum



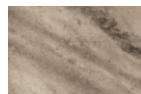
85
Matt Carrara



86
Matt Marquinia



87
Gloss Bronze



88
Matt Amazon

alice

10 Year Guarantee*
Hand Finished Vitreous China

Aliglaze+
Thin Edge Design

Made in Italy



Spy 750 Wall Basin
Finish: Matt Grey

Spy 400 Wall Basin
Finish: Matt White

**DESIGNED BY
MASSIMILIANO BRACONI**

The essence of Italian minimalism by Alice Ceramica Art Director and Designer Massimiliano Braconi.

Spy is a collection of washbasins specially designed for saving space, practicality, and comfort. A great statement piece to neatly fit any modern bathroom.



*All guarantees are subject to terms and conditions and available at: robertson.co.nz/warranties



WASTES

ALICE

BASIN CLICKER WASTE 32MM

NEW

NO OVERFLOW

NOT COMPATIBLE WITH EQUILIBRIUM 351001__ VESSEL BASIN UNLESS INSTALLED ON EQUILIBRIUM PEDESTAL

PIL008__

OPTIONAL EXTRA:

REQUIRED FOR EQUILIBRIUM 351001__ VESSEL BASIN WHEN INSTALLED ON EQUILIBRIUM PEDESTAL EXTENSION FOR FIXING TO PEDESTAL

MPROCL



ALICE

EXTENDED BASIN CLICKER WASTE 32MM

NEW

NO OVERFLOW

COMPATIBLE WITH EQUILIBRIUM 351001__ VESSEL BASIN WHEN BEING INSTALLED ON COUNTERTOP

PIL010__



ALICE FINISHES

Select finish code below e.g. Alice Basin Clicker Waste with Matt White finish: PIL00809



01
Gloss White



09
Matt White



08
Matt Black



43
Matt Coffee



19
Matt Grey



44
Matt Sand



39
Matt Alpine
Green



37
Matt Rose



97
Gloss Tabasco



98
Gloss Myrtle



95
Gloss Pyne



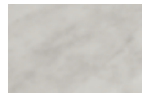
96
Gloss Honey



14
Metallic
Gold



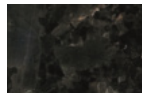
12
Metallic
Platinum



85
Matt Carrara



86
Matt Marquinia



87
Gloss Bronze



88
Matt Amazon

alice

1 Year Guarantee*
Made in Italy

25 Vestey Drive
Mt Wellington, Auckland 1060

PO Box 14695, Panmure
Auckland 1741, New Zealand

Ph: +64 9 573 0490
Fax: +64 9 573 0495
Email: sales@robertson.co.nz

ROBERTSON.CO.NZ



You can view and purchase our products nationwide from our supporting bathroom suppliers. To find your nearest location visit **ROBERTSON.CO.NZ** and click on the 'where to buy' link at the top of the page. Alternatively you can view products at our Robertson Bathware Showrooms at the locations below.

SHOWROOMS

A

AUCKLAND

ROBERTSON

25 Vestey Drive, Mt Wellington
Ph: (09) 573 0490

Open Monday to Friday 8.00am - 4.30pm
Open Saturday 9.00am - 2.00pm
Closed Sunday and public holidays

KITCHEN THINGS | LUXURY COLLECTION

26 Morrow Street, Newmarket
Ph: (09) 522 8375

Open 7 days 10am - 6pm

W

WELLINGTON

ROBERTSON

23 Marion St, Te Aro
Ph: (04) 595 1165

Open Monday to Friday 8.30am - 5pm
Closed Saturday and Sunday

C

CHRISTCHURCH

HOME IDEAS

37 Mandeville Street Riccarton
Ph: (03) 348 2863

Open Monday to Friday 9am - 4pm
Saturday 10am - 2pm Sunday 10am - 2pm

robertson
design.ideas™

ROBERTSON DESIGN IDEAS

Email: designideas@robertson.co.nz

ROBERTSONDESIGNIDEAS.CO.NZ



robertson®
trade

ROBERTSON TRADE PARTS & SERVICE CENTRE

42 Vestey Drive
Mt Wellington, Auckland 1060
Email: trade@robertson.co.nz

ROBERTSONTRADE.CO.NZ



ROBERTSON OUTLET STORE

42 Vestey Drive
Mt Wellington, Auckland 1060
Email: outlet@robertson.co.nz
By appointment only

www.trademe.co.nz/stores/robertson-bathware-outlet-store